



# 90 Degree 6711

## Features

With ultra-modern styling, the 90 Degree collection is a study in minimalism. Geometric forms, squared corners and straight lines create an urban focal point for today's contemporary baths.

- Chrome finish is highly reflective for a mirror-like look that works with any decorating style
- One-handle lever handles make it easy to adjust the water
- Single hole mount creates a cleaner look against custom countertops
- Complies with Americans with Disabilities Act (ADA) specifications
- Meets epa WaterSense® criteria to conserve water without sacrificing performance
- Deck plate sold separate





AMERICA'S NO.1 FAUCET BRAND

**DESCRIPTION**

- Metal construction with chrome plated finish
- Flexible supply lines with 3/8" compression fittings

**OPERATION**

- Lever style handle
- Temperature controlled by 100° arc of handle travel


**FLOW**

- Flow is limited to 1.5 gpm max (5.7L/min) at 60 psi

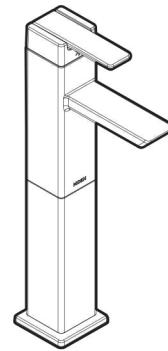
**CARTRIDGE**

- 1255™ Duralast™ cartridge for Single-Handle Faucets

**STANDARDS**

- Third party certified to ASME A112.18.1/CSA B125.1, NSF 61/9, ICC A117.1 and all applicable requirements referenced therein
- Third party certified to comply with WaterSense® High Efficiency Bathroom Sink Faucet Specification
- Complies with California Proposition 65 and with the Federal Safe Drinking Water Act
- **ADA**  for lever handle

# Specifications

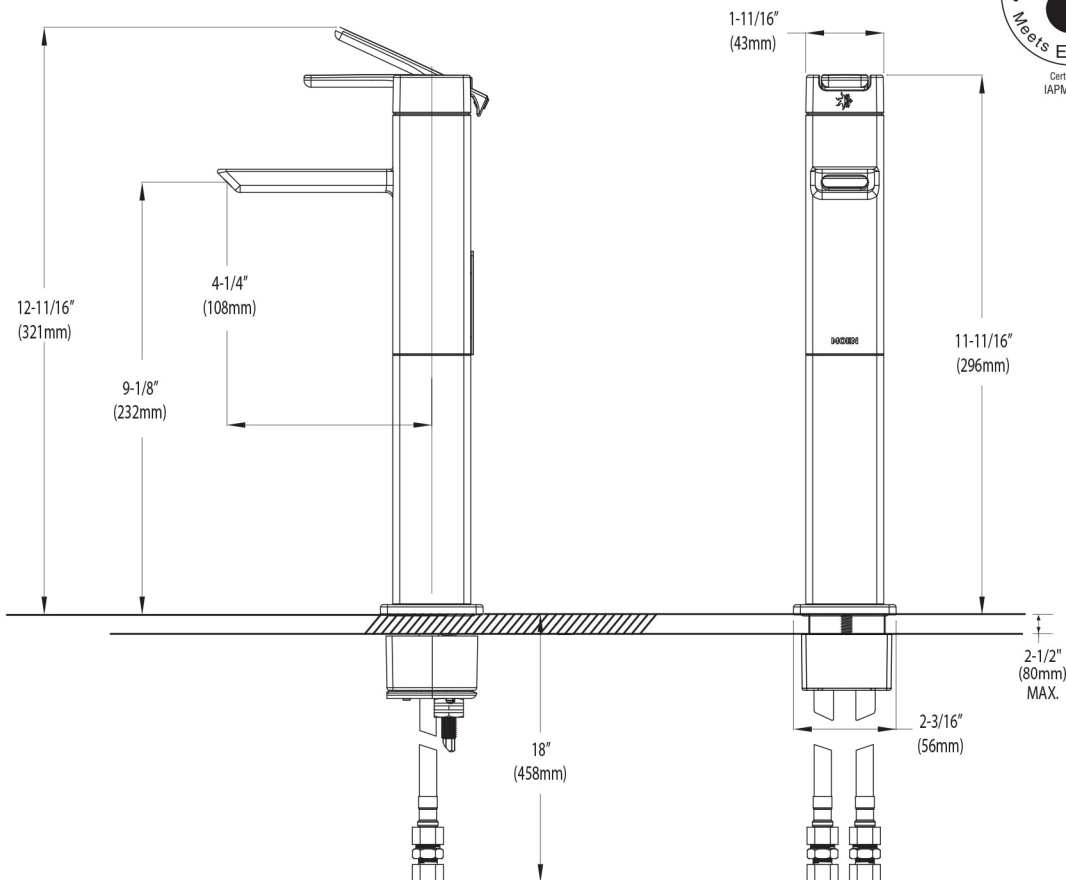


90°™

**Single-Handle Vessel Lavatory Faucet**

**Model: 6711**

**NOTE:** THIS FAUCET IS DESIGNED TO BE INSTALLED THRU 1 HOLE, 1-1/8" MIN. DIA.



## CRITICAL DIMENSIONS

(DO NOT SCALE)

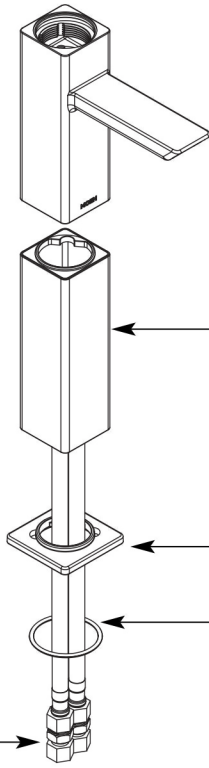
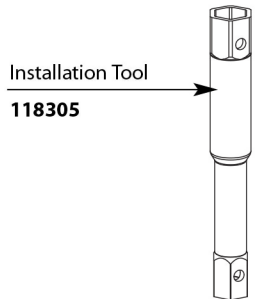
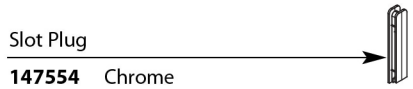
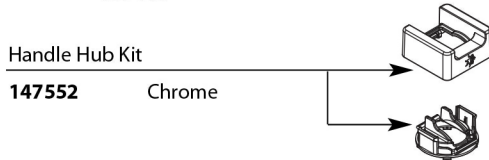
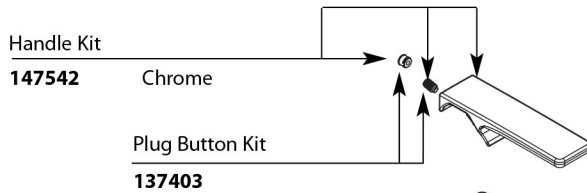


AMERICA'S NO.1 FAUCET BRAND

# Illustrated Parts

■ Order by Part Number

90 DEGREE™ One-Handle Lavatory Faucet		
MODEL	HANDLE	FINISH
6711	Lever	Chrome



- Vessel Extension (5" ext.)  
**147555** Chrome
- Vessel Extension (2" ext.)  
**147556** Chrome

- Single Mount Escutcheon  
**147549** Chrome

